
SMART Pole: Self-Contained Security & Communications System

Raptor Global Services, Inc., in cooperation with its security technology partners, introduces the Raptor '**SMART**' Pole (Security Monitoring and Assessment- Remote Terminal). The Smart Pole system is designed to provide a completely self-contained platform for video surveillance and communications. The system is designed to support site security, safety and telecommunications needs by providing remote video surveillance, perimeter security, personnel status, asset tracking and communications from remote and potentially hostile environments to virtually any location in the world via the Internet.



The SMART Pole can be equipped with a wide variety of camera, communications, security and powering options including:

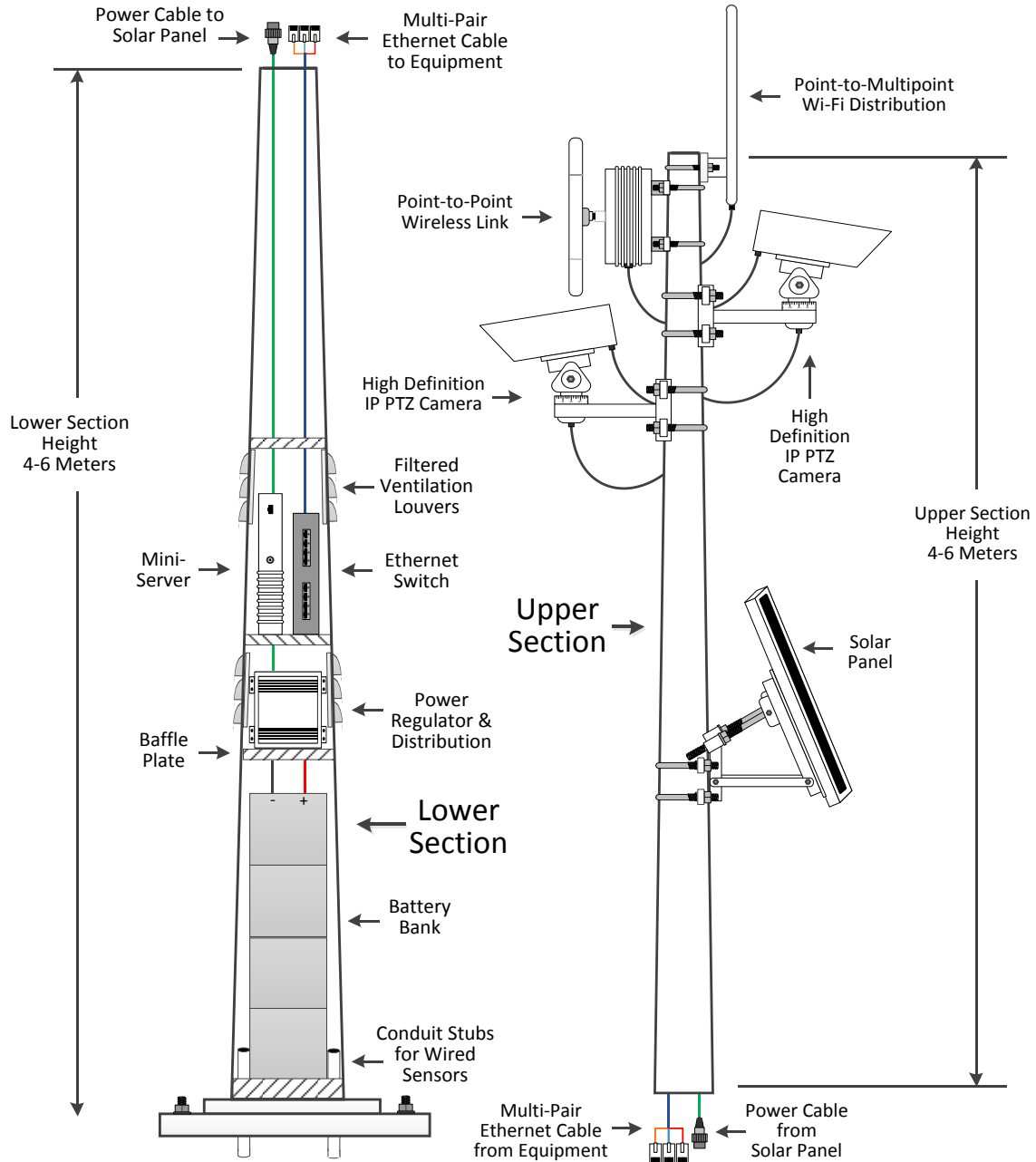
- ▶ High-definition IP cameras
- ▶ Infrared and low-light digital cameras
- ▶ Remote mechanical and electronic PTZ HD cameras
- ▶ Point-to-point wireless and wireless mesh capability
- ▶ Area-wide Wi-Fi distribution
- ▶ Internal caching and network management
- ▶ Highly reliable video analytics for license plate, facial and geo-fence recognition
- ▶ Remote wireless and wired seismic, acoustic and motion sensors
- ▶ Solar and wind power
- ▶ High-capacity batteries with up to one week of battery life without charging

Unique features of the SMART Pole include:

- ▶ The SMART Pole is completely self-contained and can be deployed in a very short amount of time.
- ▶ Multiple SMART Poles can be interconnected to provide continuous coverage over a wide area.
- ▶ Mesh architecture keeps the system on-line even if multiple SMART poles are disabled.
- ▶ A wireless interface allows control of pumps, generators, and other devices using machine-to-machine (M-M) protocol.
- ▶ Area-wide Wi-Fi coverage allows the use of laptops, I-Pads, VoIP phones and other Wi-Fi enabled devices.
- ▶ SMART Pole systems are provided on a cost-effective lease program; all installation costs, maintenance charges and upgrades are included in the monthly fee.
- ▶ Optional monitoring and security response services are available.



SMART Pole (Security Monitoring & Assessment Remote Terminal)





'MIDI' Stake: Rapidly Deployed Perimeter Security

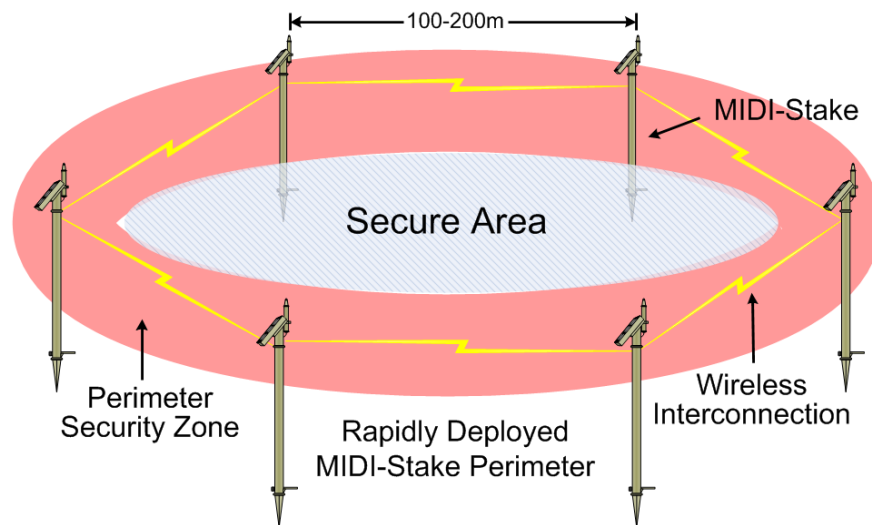
One of the 'showcase' products under development by **Raptor** is a rapidly deployed integrated perimeter security device that includes a wireless mesh interconnection, wireless data transport platform, multiple sensors, and a number of 'add-on' modules that extend the system's performance. The advanced '**MIDI-Stake**' perimeter security system is relatively inexpensive and easily deployed. It is capable of operating in a variety of environmental and terrain conditions.

The **MIDI-Stake** perimeter security system is deployed and maintained by **Raptor Global Services** and its partners worldwide. The system is either available for purchase, or is offered to a wide variety of end-users under a monthly service contract that includes:

- ▶ Providing a complete **MIDI-Stake** perimeter security solution with multiple stakes, sensors and support equipment,
- ▶ Backhaul of the data accumulated by the **MIDI-Stake** system to a common monitoring point.
- ▶ Support of the network to include configuration of a **Raptor**-operated tactical operations center (TOC), training and operational assistance,
- ▶ The secure caching of data accumulated by the network for a defined period of time,
- ▶ Ongoing maintenance, applications updates and system upgrades.

Some of the characteristics of the **MIDI-Stake** system include:

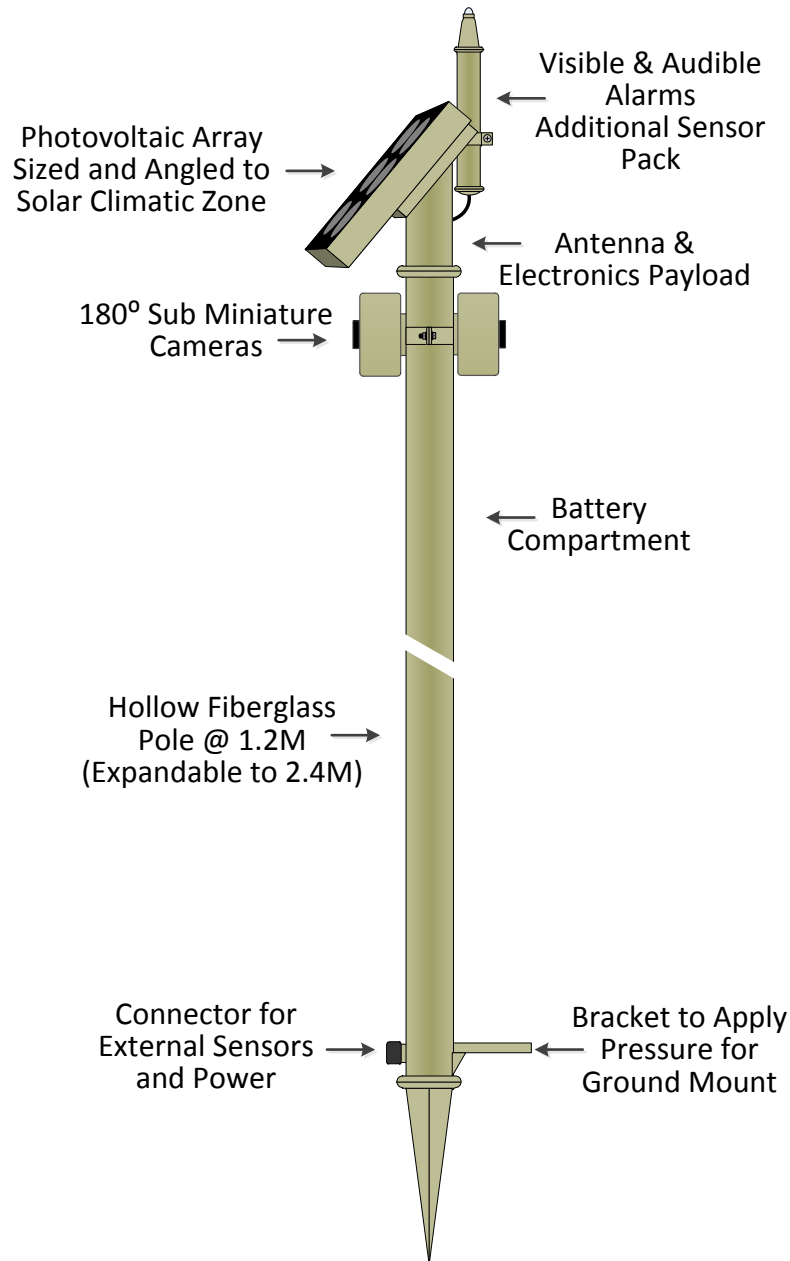
- ▶ Wireless interoperability between **MIDI-Stakes** using machine to machine (M-M) protocol,
- ▶ A self-powered device using solar power and 4-5 day battery backup,
- ▶ Highly reliable performance over a wide variety of weather and operating conditions,
- ▶ The ability to provide rapidly deployed perimeter security in less than an hour,
- ▶ Coverage over a wide area with multiple **MIDI-Stakes** 100-200 meters apart,
- ▶ A 'modular' design, allowing additional features and enhancements to be easily added in the field by non-technical personnel.





The '**MIDI-Stake**' system is very cost-effective. Deployment of a **MIDI-Stake** perimeter system costs significantly less than the cost of similar perimeter security devices. The **MIDI-Stake** is either a 'stand-alone' system or can be deployed as a complementary system to the **SITE MAST-R** remote telecom, video surveillance, and site management system (shown on the following pages).

Component Parts of the Raptor 'MIDI-Stake'





Contact

Raptor provides end-to-end security technology solutions for homeland security, military, energy, maritime, transportation and enterprise applications. For more information about **Raptor Global Services, Inc.**, please visit our website at www.raptorglobalinc.com or contact:

James Shearer at: jims@raptorglobalinc.com or call 206-388-3743 or 253-380-2575.

Paul Brandenburg at: paulb@raptorglobalinc.com or call 360-540-2058.